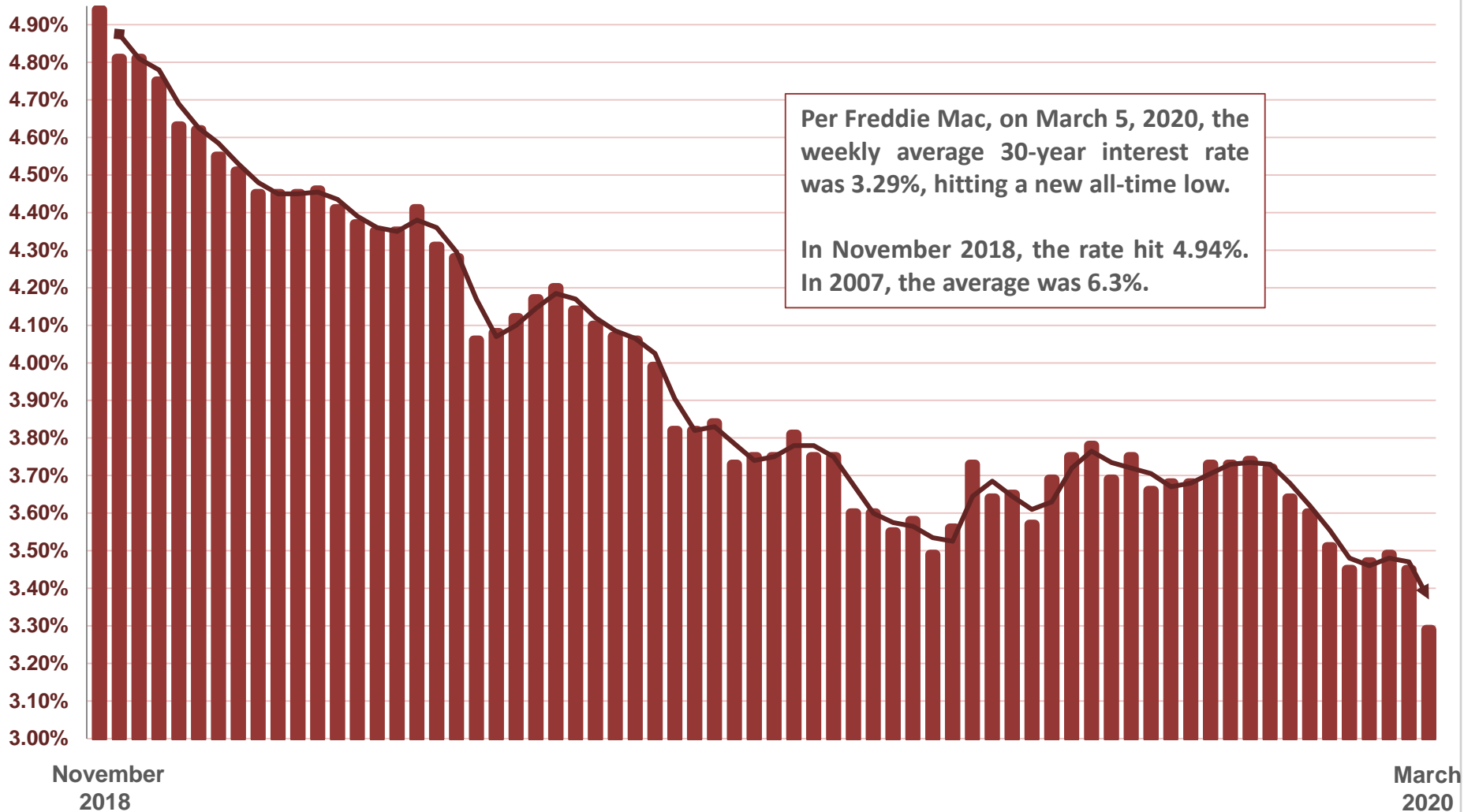


Mortgage Interest Rate Trends, November 2018 – March 2020

30-Year Conforming Loans, Weekly Average Readings

Rates published by the
FHLMC through March 5, 2020



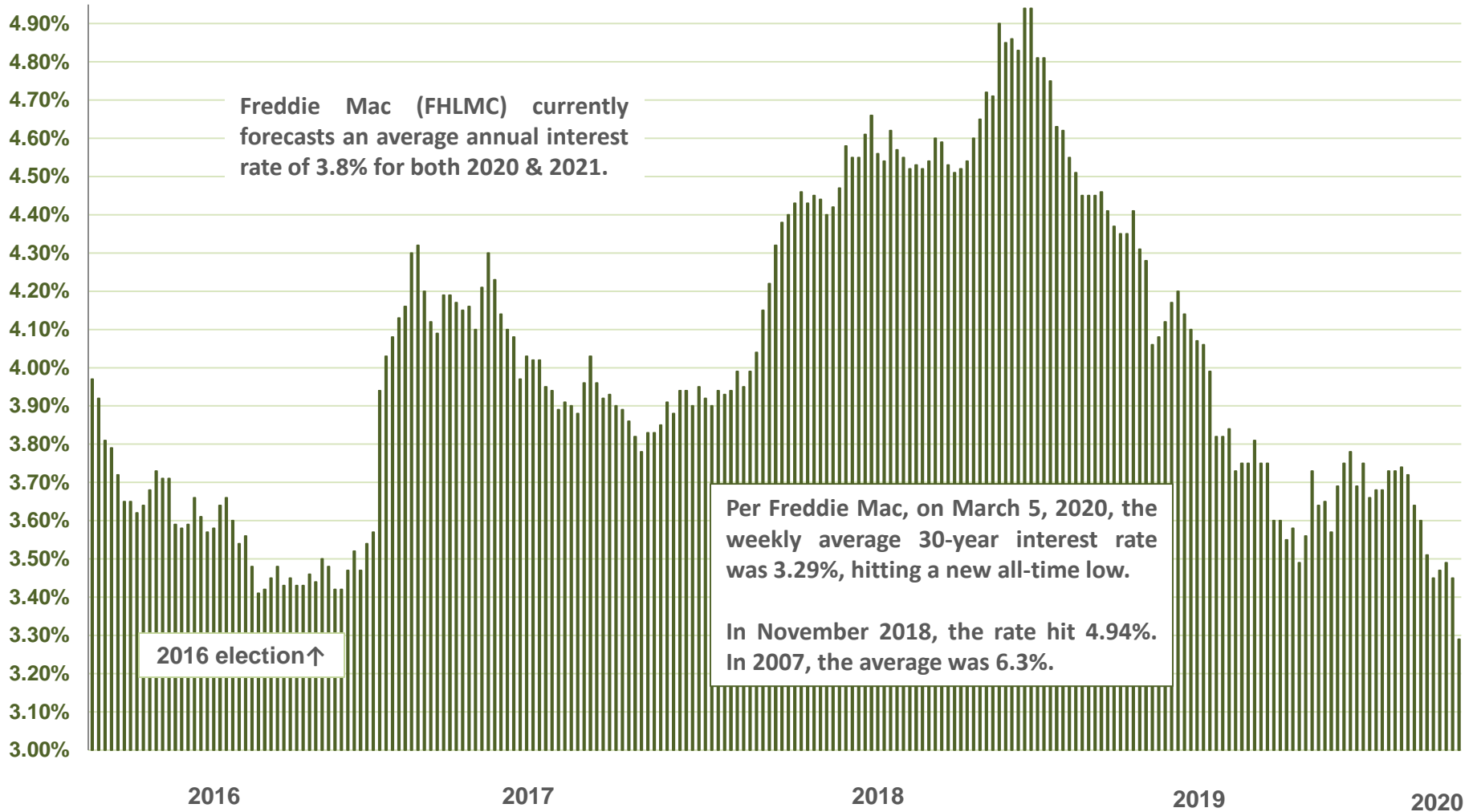
Interest rates may fluctuate suddenly and dramatically, and it is very difficult to predict rate changes. Data from sources deemed reliable but not guaranteed. Anyone interested in residential home loans should consult with a qualified mortgage professional and their accountant.

COMPASS

Mortgage Interest Rate Trends, 2016 – 2020

30-Year Conforming Loans, Weekly Average Readings

Rates published by the FHLMC,
January 7, 2016 – March 5, 2020



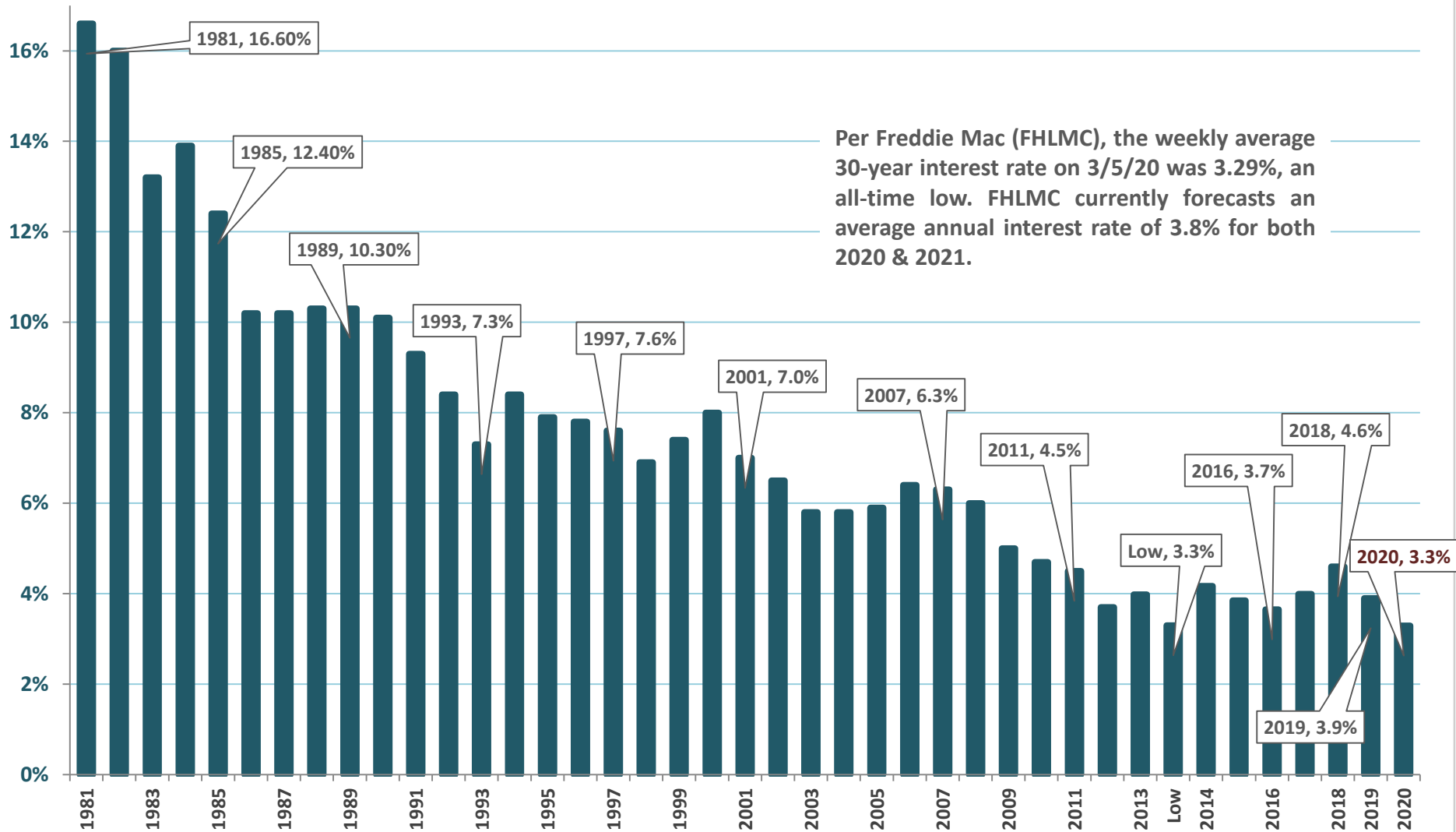
Interest rates may fluctuate suddenly and dramatically, and it is very difficult to predict rate changes. Data from sources deemed reliable but not guaranteed. Anyone interested in residential home loans should consult with a qualified mortgage professional and their accountant.

COMPASS

Average Annual Interest Rates

30-Year Conforming Loans, by Year, 1981 – Present

Annual average rates, plus last weekly rate, published by the FHLMC



Interest rates may fluctuate suddenly and dramatically. Data from sources deemed reliable but not guaranteed. Anyone interested in residential home loans should consult with a qualified mortgage professional and accountant.

COMPASS